

# Census-Staff Filter Fields for Ad hoc Reporting

October 2013

**This document is intended for restricted use only.**

**Infinite Campus asserts that this document contains proprietary information that would give our competitors undue advantage should they come into possession of any part or all of it. As such, this document cannot be publicly disclosed unless so ordered by a court of competent jurisdiction.**

©2013 Infinite Campus, Inc. All rights reserved.

INFINITE CAMPUS and Transforming K12 Education are registered trademarks of Infinite Campus, Inc. The INFINITE CAMPUS logo is a trademark of Infinite Campus, Inc. This publication, or any part thereof, may not be reproduced or transmitted in any form or any means, electronic or mechanical, including photocopying, recording, storage in an information retrieval system, or otherwise, by anyone other than Infinite Campus, Inc. without written permission of Infinite Campus, Inc., 4321 109th Avenue NE, Blaine, MN 55449, tel. (651) 631-0000, email [info@infinitecampus.com](mailto:info@infinitecampus.com).

# Census-Staff Filter Fields for Ad hoc Reporting

[Census/Staff Filter Fields \(Query Wizard\)](#) | [\(Census/Staff\) Person > Demographics](#) | [\(Census/Staff\) Person > Census](#) | [\(Census/Staff\) Person > Staff](#) | [Census/Staff > Food Service](#) | [\(Census/Staff\) Person > Campus Usage](#) | [\(Census/Staff\) Person > Custom Tab](#)



**PATH:** *Ad hoc Reporting > Filter Designer*

**PATH:** *Ad hoc Reporting > Report Designer*

The Ad hoc Reporting tools allow users to create custom queries and reports on various types of information stored within the Campus database. Reports may be used for data analysis and state reporting and queries may be exported out of Campus or used to create filters for standard reports. Custom filters and reports are built by adding elements from Ad hoc Reporting tools like the [Filter Designer](#). The following is a list of available fields that can be included in Ad hoc reports that draw from census and staff data.

The name of an Ad hoc element is not necessarily the name listed in the user interface; therefore, the following tables briefly define and map Ad hoc elements to the appropriate interface locations/fields.

These fields appear in Ad hoc Reporting > [Filter Designer](#), but many can be used in the [Letter Designer](#). However, some areas/fields are not currently available in the Report Designer.

- ✓ This article details the fields available for building Census/Staff filters. For other available fields, see the [Student](#) and [Course/Section](#) articles.

## Census/Staff Filter Fields (Query Wizard)

The following fields are available in the Filter Designer. The filter field name and the actual interface field name may differ. Interface field names are capitalized within the definition when referenced.

- ✓ See the [Query Wizard](#) article for instructions on managing these filter.

## KNOWLEDGE BASE - CENSUS-STAFF FILTER FIELDS FOR AD HOC REPORTING

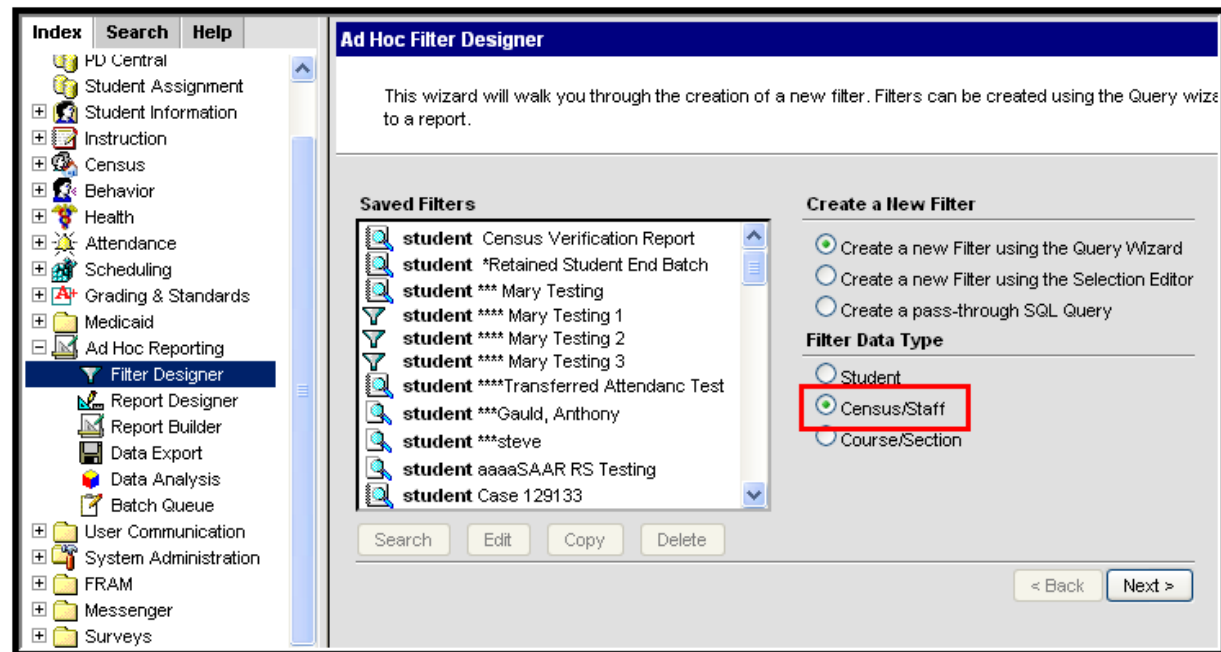


Image 1: Filter Data Type - Census/Staff

### (Census/Staff) Person > Demographics

Filter Field	Mapping and Definition
<b>personID</b>	<i>Census &gt; People &gt; Demographics</i> Internal database identifier.
<b>stateID</b>	<i>Census &gt; People &gt; Demographics</i> Unique identifier issued to a student by the state department of education for state reporting purposes.
<b>studentNumber</b>	<i>Census &gt; People &gt; Demographics</i> The unique numerical identifier assigned to a student enrolled in a school that can be formatted to district preferences and is used in state reporting.
<b>staffNumber</b>	<i>Census &gt; People &gt; Demographics</i> District-assigned staff member number.
<b>staffStateID</b>	<i>Census &gt; People &gt; Demographics</i> Staff ID used by state.
<b>personGUID</b>	<i>Census &gt; People &gt; Demographics</i> Internal database identifier.
<b>identityID</b>	Internal database identifier.

## KNOWLEDGE BASE - CENSUS-STAFF FILTER FIELDS FOR AD HOC REPORTING

<b>effectiveDate</b>	<i>Census &gt; People &gt; Demographics</i> Date identity became active.
<b>lastName</b>	<i>Census &gt; People &gt; Demographics</i> Last name of identity.
<b>firstName</b>	<i>Census &gt; People &gt; Demographics</i> First name of identity.
<b>middleName</b>	<i>Census &gt; People &gt; Demographics</i> Middle name of identity.
<b>suffix</b>	<i>Census &gt; People &gt; Demographics</i> Indication of Jr., Sr., III, IV, etc.
<b>alias</b>	<i>Census &gt; People &gt; Demographics</i> Nickname used instead of given name.
<b>gender</b>	<i>Census &gt; People &gt; Demographics</i> Male or female.
<b>birthdate</b>	<i>Census &gt; People &gt; Demographics</i> Birth date of person.
<b>ssn</b>	<i>Census &gt; People &gt; Demographics</i> Social security number of individual.
<b>raceEthnicity</b>	<i>Census &gt; People &gt; Identities</i> Race/ethnicity of person.
<b>districtID</b>	Internal database identifier.
<b>Federal Race</b>	<b>Person &gt; Demographics &gt; Federal Race</b>
<b>personID</b>	Internal database identifier.
<b>identityID</b>	Internal database identifier.
<b>raceEthnicity</b>	<i>Census &gt; People &gt; Demographics</i> Individuals state race/ethnicity
<b>hispanicEthnicity</b>	<i>Census &gt; People &gt; Demographics</i> Indicates individual's Hispanic ethnicity.
<b>raceEthnicityFed</b>	<i>Census &gt; People &gt; Demographics</i> Individual's federal race/ethnicity designation
<b>raceEthnicityDetermination</b>	<i>Census &gt; People &gt; Demographics</i> How the individual's race was determined.
<b>hispanicLatino</b>	<i>Census &gt; People &gt; Demographics</i> Indicates if individual is Hispanic/Latino.
<b>americanIndian</b>	<i>Census &gt; People &gt; Demographics</i> Indicates if individual is American Indian or Alaska Native.
<b>asian</b>	<i>Census &gt; People &gt; Demographics</i> Indicates if individual is Asian.
<b>blackOrAfricanAmerican</b>	<i>Census &gt; People &gt; Demographics</i> Indicates if individual is Black or African American.

## KNOWLEDGE BASE - CENSUS-STAFF FILTER FIELDS FOR AD HOC REPORTING

<b>pacificIslander</b>	<i>Census &gt; People &gt; Demographics</i> Indicates if individual is Native Hawaiian or Other Pacific Islander.
<b>white</b>	<i>Census &gt; People &gt; Demographics</i> Indicates if individual is White.
<b>multiracial</b>	<i>Census &gt; People &gt; Demographics</i> Indicates that person has more than one race selected.
<b>Identity History</b>	<b>Person &gt; Demographics &gt; Identity History</b>
<b>identityID</b>	Internal database identifier.
<b>personID</b>	Internal database identifier.
<b>effectiveDate</b>	<i>Census &gt; People &gt; Identities</i> Date identity became active.
<b>lastName</b>	<i>Census &gt; People &gt; Identities</i> Last name of identity.
<b>firstName</b>	<i>Census &gt; People &gt; Identities</i> First name of identity.
<b>middleName</b>	<i>Census &gt; People &gt; Identities</i> Middle name of identity.
<b>suffix</b>	<i>Census &gt; People &gt; Identities</i> Indication of Jr., Sr., III, IV, etc.
<b>alias</b>	<i>Census &gt; People &gt; Identities</i> Nickname used instead of given name.
<b>gender</b>	<i>Census &gt; People &gt; Identities</i> Male or female.
<b>birthdate</b>	<i>Census &gt; People &gt; Identities</i> Birth date of person.
<b>ssn</b>	<i>Census &gt; People &gt; Identities</i> Social security number of individual.
<b>raceEthnicity</b>	<i>Census &gt; People &gt; Identities</i> Race/ethnicity of person.
<b>birthCountry</b>	<i>Census &gt; People &gt; Identities</i> Selection of country of birth, if not U.S.
<b>dateEnteredUS</b>	<i>Census &gt; People &gt; Identities</i> Date person entered U.S.
<b>birthVerification</b>	<i>Census &gt; People &gt; Identities</i> Birth Verification certificate type (e.g. birth certificate, immigration document, physician's certificate). Not used in all states.
<b>comments</b>	<i>Census &gt; People &gt; Identities</i> Additional information associated with identity of person.
<b>districtID</b>	Internal database identifier.

## KNOWLEDGE BASE - CENSUS-STAFF FILTER FIELDS FOR AD HOC REPORTING

<b>hispanicEthnicity</b>	<i>Census &gt; People &gt; Identities</i> If flagged, checkbox indicates person is considered to be of Hispanic/Latino ethnicity. Not used in all states.
<b>identityGUID</b>	Internal database identifier.
<b>lastNamePhonetic</b>	Used in sound-alike searches.
<b>firstNamePhonetic</b>	Used in sound-alike searches.
<b>dateEnteredState</b>	<i>Census &gt; People &gt; Identities</i> Date student originally entered state.
<b>birthCertificate</b>	<i>Census &gt; People &gt; Identities</i> Type of document used to verify existence of person.
<b>immigrant</b>	<i>Student Information &gt; General &gt; Enrollments</i> Indicates the student being of immigrant status.
<b>dateEnteredUSSchool</b>	<i>Census &gt; People &gt; Identities</i> Date student entered a U.S. school for the first time.
<b>raceEthnicityFed</b>	<i>Student Information &gt; Demographics</i> Federal race/ethnicity code. May be different than the raceEthnicity selection.
<b>raceEthnicityDetermination</b>	<i>Student Information &gt; Demographics</i> Selection of how the individual was determined to be the selected race/ethnicity.
<b>birthVerificationBIE</b>	<i>Census &gt; People &gt; Demographics</i> How the individual's birth was verified.
<b>modifiedByID</b>	<i>Does not appear.</i> Lists the person who modified the information.
<b>modifiedDate</b>	<i>Does not appear.</i> Date of last change.
<b>refugee</b>	<i>Student Information &gt; General &gt; Enrollments &gt; State Reporting Fields</i> If flagged, checkbox indicates individual is a refugee.
<b>homePrimaryLanguage</b>	<i>Census &gt; People &gt; Demographics</i> The primary language spoken in the individual's home.
<b>Student Number History</b>	<b><i>Person &gt; Demographics &gt; Identity History &gt; Student Number History</i></b>
<b>personID</b>	<i>Census &gt; People &gt; ID History</i> The reporting person's personID number.
<b>startDate</b>	<i>Census &gt; People &gt; ID History</i> The start date of the person's identity containing the student number being reported.
<b>studentNumber</b>	<i>Census &gt; People &gt; ID History</i> The student number reporting data.

# KNOWLEDGE BASE - CENSUS-STAFF FILTER FIELDS FOR AD HOC REPORTING

<b>modifiedByID</b>	<i>Census &gt; People &gt; ID History</i> The last person to modify the reporting person's identity information tied to the reporting student number.
<b>endYear</b>	<i>Census &gt; People &gt; ID History</i> The year in which the reporting student number was ended.
<b>active</b>	<i>Census &gt; People &gt; ID History</i> Indicates whether or not the reporting student number is active.
<b>comments</b>	<i>Census &gt; People &gt; ID History</i> Any comments entered when the person's student number was ended.
<b>State ID History</b>	<b><i>Person &gt; Demographics &gt; Identity History &gt; State ID History</i></b>
<b>personID</b>	<i>Census &gt; People &gt; ID History</i> The reporting person's personID number.
<b>startDate</b>	<i>Census &gt; People &gt; ID History</i> The start date of the person's identity containing the stateID being reported.
<b>stateID</b>	<i>Census &gt; People &gt; ID History</i> The stateID reporting data.
<b>modifiedByID</b>	<i>Census &gt; People &gt; ID History</i> The last person to modify the reporting person's identity information tied to the reporting state ID.
<b>endYear</b>	<i>Census &gt; People &gt; ID History</i> The year in which the reporting stateID was ended.
<b>active</b>	<i>Census &gt; People &gt; ID History</i> Indicates whether or not the stateID number is active.
<b>comments</b>	<i>Census &gt; People &gt; ID History</i> Any comments entered when the person's stateID was ended.
<b>Other ID History</b>	<b><i>Person &gt; Demographics &gt; Identity History &gt; Other ID History</i></b>
<b>personID</b>	<i>Census &gt; People &gt; ID History</i> The reporting person's personID number.
<b>startDate</b>	<i>Census &gt; People &gt; ID History</i> The start date of the person's identity containing the otherID being reported.
<b>otherID</b>	<i>Census &gt; People &gt; ID History</i> The otherID reporting data.
<b>modifiedByID</b>	<i>Census &gt; People &gt; ID History</i> The last person to modify the reporting person's identity information tied to the reporting otherID.
<b>endYear</b>	<i>Census &gt; People &gt; ID History</i> The year in which the reporting otherID was ended.
<b>active</b>	<i>Census &gt; People &gt; ID History</i> Indicates whether or not the otherID number is active.



## KNOWLEDGE BASE - CENSUS-STAFF FILTER FIELDS FOR AD HOC REPORTING

<b>comments</b>	<i>Census &gt; People &gt; ID History</i> Any comments entered when the person's otherID was ended.
<b>Staff Number History</b>	<b><i>Person &gt; Demographics &gt; Identity History &gt; Staff Number History</i></b>
<b>personID</b>	<i>Census &gt; People &gt; ID History</i> The reporting person's personID number.
<b>startDate</b>	<i>Census &gt; People &gt; ID History</i> The start date of the person's identity containing the staff number being reported.
<b>staffNumber</b>	<i>Census &gt; People &gt; ID History</i> The staff number reporting data.
<b>modifiedByID</b>	<i>Census &gt; People &gt; ID History</i> The last person to modify the reporting person's identity information tied to the reporting staff number.
<b>endYear</b>	<i>Census &gt; People &gt; ID History</i> The year in which the reporting staff number was ended.
<b>active</b>	<i>Census &gt; People &gt; ID History</i> Indicates whether or not the staff number is active.
<b>comments</b>	<i>Census &gt; People &gt; ID History</i> Any comments entered when the person's staff number was ended.
<b>Staff State ID History</b>	<b><i>Person &gt; Demographics &gt; Identity History &gt; Staff State ID History</i></b>
<b>personID</b>	<i>Census &gt; People &gt; ID History</i> The reporting person's personID number.
<b>startDate</b>	<i>Census &gt; People &gt; ID History</i> The start date of the person's identity containing the staff state ID being reported.
<b>staffStateID</b>	<i>Census &gt; People &gt; ID History</i> The staff state ID reporting data.
<b>modifiedByID</b>	<i>Census &gt; People &gt; ID History</i> The last person to modify the reporting person's identity information tied to the reporting staff state ID.
<b>endYear</b>	<i>Census &gt; People &gt; ID History</i> The year in which the reporting staff state ID was ended.
<b>active</b>	<i>Census &gt; People &gt; ID History</i> Indicates whether or not the staff state ID is active.
<b>comments</b>	<i>Census &gt; People &gt; ID History</i> Any comments entered when the person's staff state ID was ended.
<b>Impact Aid Employment</b>	<b><i>Person &gt; Demographics &gt; Impact Aid Employment</i></b>
<b>personID</b>	Internal database identifier
<b>siteID</b>	Internal database identifier

## KNOWLEDGE BASE - CENSUS-STAFF FILTER FIELDS FOR AD HOC REPORTING

<b>employeeType</b>	<i>Census &gt; People &gt; Demographics &gt; Person Impact Aid Employment</i> Type of impact aid employment in which individual is participating.
---------------------	--

## KNOWLEDGE BASE - CENSUS-STAFF FILTER FIELDS FOR AD HOC REPORTING

**(Census/Staff) Person > Census**

<b>Filter Field</b>	<b>Mapping and Definition</b>
<b><i>Person Contacts</i></b>	<b><i>Person &gt; Census &gt; Person Contacts</i></b>
<b>personID</b>	Internal database identifier.
<b>homePhone</b>	<i>Census &gt; People &gt; Demographics</i> Home phone number for the associated person.
<b>workPhone</b>	<i>Census &gt; People &gt; Demographics</i> Work phone number of the associated person.
<b>cellPhone</b>	<i>Census &gt; People &gt; Demographics</i> Cell phone number of the associated person.
<b>pager</b>	<i>Census &gt; People &gt; Demographics</i> Pager number of the associated person.
<b>email</b>	<i>Census &gt; People &gt; Demographics</i> Email address of the associated person.
<b>comments</b>	<i>Census &gt; People &gt; Demographics</i> User-entered comments on personal contact information.
<b>homePhonePrivate</b>	<i>Census &gt; People &gt; Demographics</i> If flagged, checkbox indicates the home phone for this person should not be published.
<b>workPhonePrivate</b>	<i>Census &gt; People &gt; Demographics</i> If flagged, checkbox indicates the work phone for this person should not be published.
<b>cellPhonePrivate</b>	<i>Census &gt; People &gt; Demographics</i> If flagged, checkbox indicates the cell phone for this person should not be published.
<b>pagerPrivate</b>	<i>Census &gt; People &gt; Demographics</i> If flagged, checkbox indicates the pager number for this person should not be published.
<b>emailPrivate</b>	<i>Census &gt; People &gt; Demographics</i> If flagged, checkbox indicates the email address for this person should not be published.
<b>homePhoneMessenger</b>	<i>Census &gt; People &gt; Demographics</i> Number indicating which types of messages a contact will receive on his/her home phone.
<b>workPhoneMessenger</b>	<i>Census &gt; People &gt; Demographics</i> Number indicating which types of messages a contact will receive on his/her work phone.
<b>cellPhoneMessenger</b>	<i>Census &gt; People &gt; Demographics</i> Number indicating which types of messages a contact will receive on his/her cell phone.

## KNOWLEDGE BASE - CENSUS-STAFF FILTER FIELDS FOR AD HOC REPORTING

<b>emailMessenger</b>	<i>Census &gt; People &gt; Demographics</i> Number indicating which types of messages a contact will receive in his/her email.
<b>inboxMessenger</b>	<i>Census &gt; People &gt; Demographics</i> Number indicating which types of messages a contact will receive in his/her Campus Process Inbox.
<b>communicationLanguage</b>	<i>Census &gt; People &gt; Demographics</i> Stores the preferred communication language for this person used in conjunction with Messenger.
<b>modifiedByID</b>	<i>Does not appear.</i> Lists the person who modified the information.
<b>modifiedDate</b>	<i>Does not appear.</i> Date of last change.
<b>cellPhoneTxtMsg</b>	<i>Census &gt; People &gt; Demographics</i> Indicates that cell phone can receive test messages.
<b>Employment Background</b>	<b>Person &gt; Census &gt; Employment Background</b>
<b>personID</b>	Internal database identifier.
<b>lastYearState</b>	<i>Census &gt; People &gt; Employment</i> Indicates the state where the staff person was last employed.
<b>lastYearTitle</b>	<i>Census &gt; People &gt; Employment</i> Indicates the title the staff person had in the previous school year.
<b>publicEducation</b>	<i>Census &gt; People &gt; Employment</i> Notes the hours of public education for the staff person.
<b>privateEducation</b>	<i>Census &gt; People &gt; Employment</i> Notes the hours of private education for the staff person.
<b>nonEducation</b>	<i>Census &gt; People &gt; Employment</i> Notes the hours of non-education for the staff person.
<b>Contact Summary</b>	<b>Person &gt; Census &gt; Contact Summary</b>
<b>districtID</b>	Internal database identifier.
<b>personID</b>	Internal database identifier.
<b>relatedBy</b>	System determination of contact/student relationship: <ul style="list-style-type: none"> <li>Household = The people are considered related because they share the same household.</li> <li>Relationship = The people are considered related because they have a relationship other than a shared household.</li> </ul>
<b>contactID</b>	Internal database identifier.
<b>contactGUID</b>	Internal database identifier.
<b>private</b>	<i>Census &gt; Household &gt; Addresses</i> If flagged, checkbox indicates contact details are to remain unpublished in ad hoc queries and third-party mailing lists.

## KNOWLEDGE BASE - CENSUS-STAFF FILTER FIELDS FOR AD HOC REPORTING

<b>secondary</b>	<i>Census &gt; Household &gt; Addresses</i> If flagged, checkbox indicates person is a member a secondary household member or information is for a secondary address.
<b>mailing</b>	<i>Census &gt; Household &gt; Addresses</i> If flagged, checkbox indicates guardian contact should receive mailings at the specified address.
<b>guardian</b>	<i>Census &gt; People &gt; Relationships</i> If flagged, checkbox indicates contact has a guardian relationship with the selected person.
<b>portal</b>	<i>Census &gt; People &gt; Relationships</i> If flagged, checkbox indicates contact may receive information for the selected person via the Portal.
<b>messenger</b>	<i>Census &gt; People &gt; Relationships</i> If flagged, checkbox indicates contact receives messages for the selected person via Messenger .
<b>householdID</b>	Internal database identifier.
<b>householdPhone</b>	<i>Census &gt; Households</i> The phone number of the household.
<b>householdName</b>	<i>Census &gt; Households</i> The name of the household.
<b>personGUID</b>	Internal database identifier.
<b>contactPersonID</b>	Internal database identifier.
<b>studentNumber</b>	<i>Student Information &gt; General &gt; Demographics</i> The unique numerical identifier assigned to a student enrolled in a school that can be formatted to district preferences and is used in state reporting.
<b>staffNumber</b>	<i>Census &gt; People &gt; Demographics</i> Staff number used within school and district.
<b>lastName</b>	<i>Census &gt; People &gt; Demographics</i> Last name of current identity.
<b>firstName</b>	<i>Census &gt; People &gt; Demographics</i> First name of current identity.
<b>middleName</b>	<i>Census &gt; People &gt; Demographics</i> Middle name of current identity.
<b>suffix</b>	<i>Census &gt; People &gt; Demographics</i> Indication of Jr. Sr. III, IV, etc. of current identity.
<b>gender</b>	<i>Census &gt; People &gt; Demographics</i> Male or female.
<b>birthdate</b>	<i>Census &gt; People &gt; Demographics</i> Birth date of person.
<b>relationship</b>	<i>Census &gt; People &gt; Relationships</i> Name of the relationship between the person and the contact.

## KNOWLEDGE BASE - CENSUS-STAFF FILTER FIELDS FOR AD HOC REPORTING

<b>seq</b>	<i>Census &gt; People &gt; Relationships</i> Sequence number given to a relationship.
<b>grade</b>	<i>Student Information &gt; General &gt; Enrollments</i> Notes the grade level of the student.
<b>calendarName</b>	<i>System Administration &gt; Calendar &gt; Calendar</i> User-entered name of the calendar associated with the student's current enrollment.
<b>homePhone</b>	<i>Census &gt; People &gt; Demographics</i> Home phone number for the associated person.
<b>workPhone</b>	<i>Census &gt; People &gt; Demographics</i> Work phone number for the associated person.
<b>cellPhone</b>	<i>Census &gt; People &gt; Demographics</i> Cell phone number for the associated person.
<b>pager</b>	<i>Census &gt; People &gt; Demographics</i> Pager number for the associated person.
<b>email</b>	<i>Census &gt; People &gt; Demographics</i> Email address for the associated person.
<b>comments</b>	<i>Census &gt; People &gt; Demographics</i> User-entered information on contact information.
<b>number</b>	<i>Census &gt; People &gt; Demographics</i> Street address house number (e.g. 123, 28345).
<b>street</b>	<i>Census &gt; Address</i> Street name of address (e.g. Main, 7th, Fourth).
<b>tag</b>	<i>Census &gt; Address</i> Postal tag for address (e.g. St., Ave., Blvd.).
<b>prefix</b>	<i>Census &gt; Address</i> Direction if prior to the street name (e.g. E, W, NE) as in NE 7th St.
<b>dir</b>	<i>Census &gt; Address</i> Direction if after the street name (e.g. E, W, NE) as in 7th St. NE.
<b>apt</b>	<i>Census &gt; Address</i> Apartment number (e.g. 201, 3a).
<b>city</b>	<i>Census &gt; Address</i> Postal city for the address.
<b>state</b>	<i>Census &gt; Address</i> Two digit state code for the address.
<b>zip</b>	<i>Census &gt; Address</i> Postal zip code (zip + 4 available).
<b>county</b>	<i>Census &gt; Address</i> County in which this address resides.
<b>addressLine1</b>	Combination of first line address elements (street number, name , tag, etc.)

## KNOWLEDGE BASE - CENSUS-STAFF FILTER FIELDS FOR AD HOC REPORTING

<b>addressLine2</b>	Combination of second line address elements (e.g. city, state, zip).
<b>residentDistrictID</b>	<i>Student Information &gt; General &gt; Enrollments</i> District ID of person's resident district.
<b>residentDistrictNumber</b>	<i>Student Information &gt; General &gt; Enrollments</i> State-defined district number for the person's resident district.
<b>residentDistrictType</b>	<i>Student Information &gt; General &gt; Enrollments</i> State-defined district type for the person's resident district.
<b>residentDistrictName</b>	<i>Student Information &gt; General &gt; Enrollments</i> State-defined name of the district person lives in as associated with his/her address.
<b>addressID</b>	Internal database identifier.
<b>location_code</b>	<i>Census &gt; Address</i> District-defined code to identify address location.
<b>tract</b>	<i>Census &gt; Address</i> Government-defined tract address is part of.
<b>block</b>	<i>Census &gt; Address</i> Government-defined block address is located on.
<b>privatePhone</b>	<i>Census &gt; Households</i> If flagged, checkbox indicates household phone number should not be part of third-party mailing lists.
<b>privateAddress</b>	<i>Census &gt; Households &gt; Addresses</i> If flagged, checkbox indicates address should not be part of third-party mailing lists.
<b>modifiedDate</b>	<i>Does not appear.</i> Date of last change.
<b>Mailing Address</b>	<b><i>Person &gt; Census &gt; Mailing Addresses</i></b>
<b>districtID</b>	Internal database identifier.
<b>personID</b>	Internal database identifier.
<b>relatedBy</b>	System determination of contact/student relationship: <ul style="list-style-type: none"> <li>• Household = The people are considered related because they share the same household.</li> <li>• Relationship = The people are considered related because they have a relationship other than a shared household.</li> </ul>
<b>addressID</b>	Internal database identifier.
<b>householdID</b>	Internal database identifier.
<b>phone</b>	<i>Census &gt; People &gt; Demographics</i> Home phone number for the associated person.
<b>householdName</b>	<i>Census &gt; Households</i> The name of the household.

## KNOWLEDGE BASE - CENSUS-STAFF FILTER FIELDS FOR AD HOC REPORTING

<b>number</b>	<i>Census &gt; Address</i> Street address house number.
<b>street</b>	<i>Census &gt; Address</i> Street name if address (i.e. Main, 7th, Fourth, etc).
<b>tag</b>	<i>Census &gt; Address</i> Postal tag for address (i.e. St, Ave, Blvd, etc).
<b>prefix</b>	<i>Census &gt; Address</i> Direction if prior to the street name, as in "NE" 7th St.
<b>dir</b>	<i>Census &gt; Address</i> Direction if after the street name, as in 7th S. "NE".
<b>apt</b>	<i>Census &gt; Address</i> Apartment number (i.e. 201, 3a, etc)
<b>city</b>	<i>Census &gt; Address</i> Postal city of address.
<b>state</b>	<i>Census &gt; Address</i> Two digit state code for the address.
<b>zip</b>	<i>Census &gt; Address</i> Postal zip code (zip + 4 available).
<b>county</b>	<i>Census &gt; Address</i> County in which this address resides.
<b>postOfficeBox</b>	<i>Census &gt; Address</i> Flag to indicate that this address is a PO Box.
<b>addressLine1</b>	Combination of first line address elements (e.g. street number, name, tag)
<b>addressLine2</b>	Combination of second line address elements (e.g. city, state, zip).
<b>guardianPersonID</b>	Internal database identifier
<b>guardianName</b>	<i>Census &gt; Relationships</i> Full name of a person flagged as a guardian on student's relationship tab.
<b>guardianLastName</b>	<i>Census &gt; Relationships</i> Last name of a person flagged as a guardian on student's relationship tab.
<b>guardianFirstName</b>	<i>Census &gt; Relationships</i> First name of a person flagged as a guardian on student's relationship tab.
<b>guardianMiddlename</b>	<i>Census &gt; Relationships</i> Middle name of a person flagged as a guardian on student's relationship tab.
<b>location_code</b>	<i>Census &gt; Address</i> District-defined code to identify address location.



## KNOWLEDGE BASE - CENSUS-STAFF FILTER FIELDS FOR AD HOC REPORTING

<b>tract</b>	<i>Census &gt; Address</i> Government defined tract this address is part of.
<b>block</b>	<i>Census &gt; Address</i> Government defined block this address resides on.
<b>secondary</b>	<i>Census &gt; Household &gt; Addresses</i> Flag determines if the household this person is a member of is their secondary household.
<b>addressDistrictID</b>	Internal database identifier.
<b>guardian</b>	<i>Census &gt; Address &gt; Households</i> Indicates guardian relationship is flagged.
<b>modifiedDate</b>	<i>Does not appear.</i> Date of last change.
<b>School Choice</b>	<b><i>Person &gt; Census &gt; School Choice</i></b>
<b>endYear</b>	<i>System Administration &gt; Calendar &gt; School Years</i> The last year of the school year in yyyy format.
<b>label</b>	<i>System Administration &gt; Calendar &gt; School Years</i> The name of the school year.
<b>startYear</b>	<i>System Administration &gt; Calendar &gt; School Years</i> The first year of the school year in yyyy format.
<b>applicationID</b>	Internal database identifier.
<b>calendarID</b>	Internal database identifier.
<b>calendarName</b>	<i>System Administration &gt; Calendar</i> The name of the calendar, generally reflective of the year and school it relates to (i.e. 07-08 Harrison High School).
<b>schoolID</b>	Internal database identifier.
<b>name</b>	<i>System Administration &gt; School Choice &gt; Rules</i> Name of the rule to be applied to incoming school choice applications.
<b>personID</b>	Internal database identifier.
<b>applicationYearID</b>	Internal database identifier.
<b>applicationDate</b>	<i>Census &gt; People &gt; School Choice</i> Date school choice application was received.
<b>processedDate</b>	<i>Census &gt; People &gt; School Choice</i> Date school choice application was reviewed by school.
<b>approvalStatus</b>	<i>Census &gt; People &gt; School Choice</i> Status of processed application (i.e. (APP)roved, (DEN)ied, (PEN)ding, (WAI)t-listed).
<b>acceptedStatus</b>	<i>Census &gt; People &gt; School Choice</i> Status of student's decision on whether or not to enroll when application has been approved by school (i.e. accepted, pending/ declined).

## KNOWLEDGE BASE - CENSUS-STAFF FILTER FIELDS FOR AD HOC REPORTING

<b>acceptedDate</b>	<i>Census &gt; People &gt; School Choice</i> Date student made decision on whether or not to enroll in school.
<b>gradeLevel</b>	<i>Census &gt; People &gt; School Choice</i> The grade level student would be enrolled into if application is approved.
<b>randomNumber</b>	Random number assigned to application by system in the event a tiebreaker is necessary.
<b>allowAccept</b>	<i>Census &gt; People &gt; School Choice</i> If flagged, checkbox indicates that after application is approved, student acceptance is allowed via Portal.
<b>priority</b>	<i>Scheduling &gt; Courses</i> The priority of the course as related to others courses in the scheduling process.
<b>posted</b>	<i>Census &gt; People &gt; School Choice</i> Indication that school choice application has posted.
<b>overrideID</b>	Internal database identifier.
<b>lockApprovalStatus</b>	<i>Census &gt; People &gt; School Choice</i> Indicates approval status is locked.
<b>comments</b>	<i>Census &gt; People &gt; School Choice</i> User-entered comments on school choice application.
<b>ruleID</b>	Internal database identifier.
<b>code</b>	<i>System Administration &gt; School Choice &gt; Rules</i> Code assigned to School Choice rule.
<b>ruleName</b>	<i>System Administration &gt; School Choice &gt; Rules</i> The name of the rule.
<b>weight</b>	<i>System Administration &gt; School Choice &gt; Rules</i> The weight assigned to applications in compliance with rule.
<b>Student Assignment Override</b>	<b><i>Person &gt; Census &gt; Student Assignment Override</i></b>
<b>studentOverrideID</b>	Internal database identifier.
<b>personID</b>	Internal database identifier.
<b>calendarID</b>	Internal database identifier.
<b>overrideType</b>	<i>Census &gt; People &gt; Overrides</i> Type of override assigned to student.
<b>startDate</b>	<i>Census &gt; People &gt; Overrides</i> First day override applies to student.
<b>endDate</b>	<i>Census &gt; People &gt; Overrides</i> Last day override applies to student.
<b>modifiedDate</b>	<i>Census &gt; People &gt; Overrides</i> Time stamp of modification to student override.

## KNOWLEDGE BASE - CENSUS-STAFF FILTER FIELDS FOR AD HOC REPORTING

<b>modifiedByID</b>	<i>Does not appear.</i> Lists the person who modified the information.
<b>oldStartDate</b>	<i>Census &gt; People &gt; Overrides</i> Original start date when multiple overrides exist.
<b>oldEndDate</b>	<i>Census &gt; People &gt; Overrides</i> Original end date when multiple overrides exist.

**(Census/Staff) Person > Staff**

Filter Field	Mapping and Definition
<b>District Employment</b>	<b>Person &gt; Staff &gt; District Employment</b>
<b>employmentID</b>	Internal database identifier.
<b>personID</b>	Internal database identifier.
<b>districtID</b>	Internal database identifier.
<b>districtStartDate</b>	<i>Census &gt; People &gt; District Employment</i> Very first date staff member was employed within district. Dates are entered in <i>mmddyy</i> format.
<b>districtEndDate</b>	<i>Census &gt; People &gt; District Employment</i> Very last date staff member was employed within district. Dates are entered in <i>mmddyy</i> format.
<b>teachingStartYear</b>	<i>Census &gt; People &gt; District Employment</i> First year instructor began teaching within the district. Date fields are entered in <i>mmddyy</i> format.
<b>teachingYearsModifier</b>	<i>Census &gt; People &gt; District Employment</i> Number of years to add or subtract from years since teachingStartYear field. Used to determine totalYearsTeaching.
<b>totalYearsTeaching</b>	<i>Census &gt; People &gt; District Employment</i> Number of years since teachingStartYear field plus value from teachingYearsModifier field.
<b>licenseNumber</b>	<i>Census &gt; People &gt; District Employment</i> Records the license number of staff member.
<b>ftePercent</b>	<i>Census &gt; People &gt; District Employment</i> Lists the full-time employment percentage of staff member (rounds to whole number).
<b>seniority</b>	<i>Census &gt; People &gt; District Employment</i> Notes the seniority level of the staff member. Options are defined in System Administration > Custom > Attribute/Dictionary > Employment.

## KNOWLEDGE BASE - CENSUS-STAFF FILTER FIELDS FOR AD HOC REPORTING

<b>educationLevel</b>	<i>Census &gt; People &gt; District Employment</i> Lists the completed education degree of the staff person.
<b>exitReason</b>	<i>Census &gt; People &gt; District Employment</i> Reason the employee is no longer employed at the district.
<b>active</b>	System indicator of active employment assignment of staff member in district. The employment assignment Start Date must be earlier than the current date and the End Date must either be in the future or null.
<b>District</b>	<b><i>Person &gt; Staff &gt; District Employment &gt; District</i></b>
<b>districtID</b>	Internal database identifier.
<b>ncesDistrictID</b>	Internal database identifier.
<b>number</b>	<i>System Administration &gt; Resources &gt; District Information</i> State-assigned district number.
<b>name</b>	<i>System Administration &gt; Resources &gt; District Information</i> State-recognized district name.
<b>type</b>	<i>System Administration &gt; Resources &gt; District Information</i> State-defined district type used for state reporting.
<b>state</b>	<i>System Administration &gt; Resources &gt; District Information</i> State in which the district exists.
<b>comments</b>	<i>System Administration &gt; Resources &gt; District Information</i> User-entered additional information.
<b>address</b>	<i>System Administration &gt; Resources &gt; District Information</i> Mailing address of the district office.
<b>city</b>	<i>System Administration &gt; Resources &gt; District Information</i> Mailing city of the district office.
<b>zip</b>	<i>System Administration &gt; Resources &gt; District Information</i> Mailing zip code (zip+4 available) of the district office.
<b>county</b>	<i>System Administration &gt; Resources &gt; District Information</i> Mailing county of the district office.
<b>phone</b>	<i>System Administration &gt; Resources &gt; District Information</i> General information phone number for the district office.
<b>fax</b>	<i>System Administration &gt; Resources &gt; District Information</i> General fax number for the district office.
<b>email</b>	<i>System Administration &gt; Resources &gt; District Information</i> General information email for the district office.
<b>districtGUID</b>	Internal database identifier.
<b>stateLinked</b>	System indicator to determine whether district is linked with a state or regional installation of Campus.
<b>url</b>	<i>System Administration &gt; Resources &gt; District Information</i> General URL for the district.

## KNOWLEDGE BASE - CENSUS-STAFF FILTER FIELDS FOR AD HOC REPORTING

<b>contactLastName</b>	<i>System Administration &gt; Resources &gt; District Information</i> Primary contact last name for the district.
<b>contactFirstName</b>	<i>System Administration &gt; Resources &gt; District Information</i> Primary contact first name for the district.
<b>inactive</b>	System indicator to determine if the district is currently active.
<b>legacyKey</b>	Used during data conversion.
<b>spedFax</b>	<i>System Administration &gt; Resources &gt; District Information</i> District Special Ed office fax number.
<b>spedPhone</b>	<i>System Administration &gt; Resources &gt; District Information</i> District Special Ed office phone number.
<b>spedContactFirstName</b>	<i>System Administration &gt; Resources &gt; District Information</i> District Special Ed contact first name.
<b>spedContactLastName</b>	<i>System Administration &gt; Resources &gt; District Information</i> District Special Ed contact last name.
<b>regionNumber</b>	<i>System Administration &gt; Resources &gt; District Information</i> The state-defined region that logically or physically groups districts together for reporting purposes.
<b>legacyKey</b>	Used during data conversion.
<b>spedAddress</b>	<i>System Administration &gt; Resources &gt; District Information</i> District Special Ed mailing address.
<b>spedCity</b>	<i>System Administration &gt; Resources &gt; District Information</i> District Special Ed mailing city.
<b>spedState</b>	<i>System Administration &gt; Resources &gt; District Information</i> District Special Ed mailing state.
<b>spedZip</b>	<i>System Administration &gt; Resources &gt; District Information</i> District Special Ed mailing zip code (zip+4 available).
<b>spedCounty</b>	<i>System Administration &gt; Resources &gt; District Information</i> District Special Ed mailing county.
<b>groupNumber</b>	District number assigned by and only used in the federal installation to allow tracking of both the state-assigned district number and the federal assigned number.
<b>federalTaxID</b>	<i>System Administration &gt; Resources &gt; District Information</i> Federal ID for Medicaid billing.
<b>nationalProviderID</b>	<i>System Administration &gt; Resources &gt; District Information</i> National Provider ID for Medicaid billing.
<b>mchpProviderID</b>	<i>System Administration &gt; Resources &gt; District Information</i> MHCP Provider ID for Medicaid billing.
<b>districtCode</b>	<i>System Administration &gt; Resources &gt; District Information</i> District Code indicating district type (e.g. Public Schools, Correctional Facilities, Alternative). Not used in all states.

## KNOWLEDGE BASE - CENSUS-STAFF FILTER FIELDS FOR AD HOC REPORTING

<b>physicalAddress</b>	<i>System Administration &gt; Resources &gt; District Information</i> Physical address of district.
<b>physicalCity</b>	<i>System Administration &gt; Resources &gt; District Information</i> Physical city of district.
<b>physicalState</b>	<i>System Administration &gt; Resources &gt; District Information</i> Physical state of district.
<b>physicalZip</b>	<i>System Administration &gt; Resources &gt; District Information</i> Physical zip code of district.
<b>status</b>	<i>System Administration &gt; Resources &gt; District Information</i> Operational status of district. Not used in all states.
<b>ISDNumber</b>	<i>System Administration &gt; Resources &gt; District Information</i> Independent school district number.
<b>Assignment</b>	<b><i>Person &gt; Staff &gt; Assignment</i></b>
<b>assignmentID</b>	Internal database identifier.
<b>personID</b>	Internal database identifier.
<b>schoolID</b>	Internal database identifier.
<b>schoolNumber</b>	<i>System Administration &gt; Resources &gt; School</i> NCES school number.
<b>schoolName</b>	<i>System Administration &gt; Resources &gt; School</i> State-designated school name.
<b>schoolType</b>	<i>System Administration &gt; Resources &gt; School</i> Type of school (e.g. middle, elementary, primary).
<b>departmentID</b>	Internal database identifier.
<b>departmentName</b>	<i>Census &gt; People &gt; District Assignments</i> District or school-defined department name for use in organizing curriculum.
<b>assignmentStartDate</b>	<i>Census &gt; People &gt; District Assignments</i> Very first date the staff member was employed at the specified school. Dates are entered in <i>mmddyy</i> format.
<b>assignmentEndDate</b>	<i>Census &gt; People &gt; District Assignments</i> Very last date the staff member was employed at the specified school. Dates are entered in <i>mmddyy</i> format.
<b>ftInAssignment</b>	<i>Census &gt; People &gt; District Assignments</i> Full-time employment percentage of staff member within specified school (rounds to whole number).
<b>highlyQualified</b>	<i>Census &gt; People &gt; District Assignments</i> Denotes the staff person as being highly qualified for the assignment, based on district policy.
<b>titleCode</b>	<i>System Administration &gt; Custom &gt; Attribute/Dictionary</i> Code associated with the title selected on Census > Person > District Assignments for staff member.

## KNOWLEDGE BASE - CENSUS-STAFF FILTER FIELDS FOR AD HOC REPORTING

<b>title</b>	<i>Census &gt; People &gt; District Assignments</i> Position name of the staff person.
<b>type</b>	<i>Census &gt; People &gt; District Assignments</i> Type of employment assignment.
<b>programCategory</b>	<i>Census &gt; People &gt; District Assignments</i> Indication of what type of program the staff member teachers, such as Special Education or Title 1. Not used in all states.
<b>assignmentCode</b>	<i>Census &gt; People &gt; District Assignments</i> District-provided code associated with the employment at the school.
<b>teacher</b>	<i>Census &gt; People &gt; District Assignments</i> If flagged, checkbox indicates staff member is a teacher.
<b>specialEd</b>	<i>Census &gt; People &gt; District Assignments</i> If flagged, checkbox indicates person is a special education staff member.
<b>behavior</b>	<i>Census &gt; People &gt; District Assignments</i> If flagged, checkbox indicates staff member oversees behavior events.
<b>health</b>	<i>Census &gt; People &gt; District Assignments</i> If flagged, checkbox indicates staff member may record health events and records.
<b>advisor</b>	<i>Census &gt; People &gt; District Assignments</i> If flagged, checkbox indicates staff member may advise PDPs, PLPs and/or IEPs.
<b>supervisor</b>	<i>Census &gt; People &gt; District Assignments</i> If flagged, checkbox indicates staff member is a supervisor of other employees.
<b>counselor</b>	<i>Census &gt; People &gt; District Assignments</i> If flagged, checkbox indicates staff member can act as a counselor.
<b>foodservice</b>	<i>Census &gt; People &gt; District Assignments</i> If flagged, checkbox indicates staff member is a food service staff member and is uses food service and POS functionality.
<b>excludeReferral</b>	<i>Census &gt; People &gt; District Assignments</i> If flagged, checkbox indicates staff member is excluded from behavior referral records.
<b>active</b>	System indicator of active employment assignment of staff member in district.
<b>readingFirst</b>	<i>Census &gt; People &gt; District Assignment</i> Indicates the staff person is trained on Reading First theories.
<b>subjectMatter</b>	<i>Census &gt; People &gt; District Assignment</i> Indicates the subject area in which the teacher exhibits Digits competency.



## KNOWLEDGE BASE - CENSUS-STAFF FILTER FIELDS FOR AD HOC REPORTING

<b>gradeLevel</b>	<i>Census &gt; People &gt; District Assignment</i> Selection of grade levels staff person is able to teach.
<b>otherFundingPercent</b>	<i>Census &gt; People &gt; District Assignment</i> Notes the total percentage of salary the staff person is paid by other sources.
<b>generalFundingPercent</b>	<i>Census &gt; People &gt; District Assignment</i> Notes the total percentage of salary the staff person is paid by general funding dollars.
<b>federalFundingPercent</b>	<i>Census &gt; People &gt; District Assignment</i> Notes the total percentage of salary the staff person is paid by federal dollars, usually reserved for those that work with Title 1 students.
<b>salary</b>	<i>Census &gt; People &gt; District Assignment</i> Staff person's yearly income.
<b>daysPerYear</b>	<i>Census &gt; People &gt; District Assignment</i> Entry indicates how many days per year the staff person works.
<b>hoursPerDay</b>	<i>Census &gt; People &gt; District Assignments</i> Number of hours per day the staff member works. Not used in all states.
<b>districtID</b>	Internal database identifier.
<b>spedAgeGroup</b>	<i>Census &gt; People &gt; District Assignments</i> Special education age group, only used by BIE.
<b>School</b>	<b>Person &gt; Staff &gt; Assignment &gt; School</b>
<b>schoolID</b>	Internal database identifier.
<b>districtID</b>	Internal database identifier.
<b>ncesSchoolID</b>	<i>System Administration &gt; Resources School</i> NCES school number.
<b>number</b>	<i>System Administration &gt; Resources &gt; School</i> NCES school number.
<b>name</b>	<i>System Administration &gt; Resources &gt; School</i> Official name of school.
<b>type</b>	<i>System Administration &gt; Resources &gt; School</i> Designated type of school (e.g. Elementary, Middle, High, etc.).
<b>comments</b>	<i>System Administration &gt; Resources &gt; School</i> User-entered notes about the school.
<b>address</b>	<i>System Administration &gt; Resources &gt; School</i> Mailing address of school building.
<b>city</b>	<i>System Administration &gt; Resources &gt; School</i> Mailing city of school building.
<b>state</b>	<i>System Administration &gt; Resources &gt; School</i> State of school building.



## KNOWLEDGE BASE - CENSUS-STAFF FILTER FIELDS FOR AD HOC REPORTING

<b>zip</b>	<i>System Administration &gt; Resources &gt; School</i> Zip code of school building.
<b>phone</b>	<i>System Administration &gt; Resources &gt; School</i> Phone number of school building.
<b>fax</b>	<i>System Administration &gt; Resources &gt; School</i> Fax number of school building.
<b>email</b>	<i>System Administration &gt; Resources &gt; School</i> Email of school building.
<b>url</b>	<i>System Administration &gt; Resources &gt; School</i> Checked if school allows students to be enrolled in two buildings at one time.
<b>dualEnrollment</b>	<i>System Administration &gt; Resources &gt; School</i> Checked if school allows students to be enrolled in two buildings at one time.
<b>title1</b>	<i>System Administration &gt; Resources &gt; School</i> Selected if school provides Title 1 services.
<b>principalName</b>	<i>System Administration &gt; Resources &gt; School</i> Name of principal.
<b>principalTitle</b>	<i>System Administration &gt; Resources &gt; School</i> Principal's title.
<b>principalEmail</b>	<i>System Administration &gt; Resources &gt; School</i> Email of principal.
<b>schoolGUID</b>	Internal database identifier.
<b>catalogID</b>	Internal database identifier.
<b>satNumber</b>	<i>System Administration &gt; Resources &gt; School</i> School number for SAT purposes; varies by state (e.g. CEEB, CBBC).
<b>standardCode</b>	<i>System Administration &gt; Resources &gt; School</i> Code related to SIF/DIS information.
<b>agency</b>	<i>System Administration &gt; Resources &gt; School</i> Agency (Education Line Office) associated with school. Not used in all states.
<b>restructureStartDate</b>	<i>System Administration &gt; Resources &gt; School &gt; School</i> For BIE schools, the date on which restructuring to meet NCLB standards began.
<b>restructureEndDate</b>	<i>System Administration &gt; Resources &gt; School &gt; School</i> For BIE schools, the date on which restructuring to meet NCLB standards ended.
<b>groupNumber</b>	District number assigned by and only used in the federal installation to allow tracking of both the state-assigned district number and the federal assigned number.

## KNOWLEDGE BASE - CENSUS-STAFF FILTER FIELDS FOR AD HOC REPORTING

<b>aypGrouping</b>	<i>System Administration &gt; Resources &gt; School</i> AYP Grouping of school (e.g. K-8, 9-12, exclude). Not used in all states.
<b>reportingSchoolID</b>	Internal database identifier.
<b>physicalAddress</b>	<i>System Administration &gt; Resources &gt; School</i> Physical address of school building.
<b>physicalCity</b>	<i>System Administration &gt; Resources &gt; School</i> Physical city of school building.
<b>physicalState</b>	<i>System Administration &gt; Resources &gt; School</i> Physical state of school building.
<b>physicalZip</b>	<i>System Administration &gt; Resources &gt; School</i> Physical zip code of school building.
<b>county</b>	<i>System Administration &gt; Resources &gt; School</i> County of school. Not used in all states.
<b>status</b>	<i>System Administration &gt; Resources &gt; School</i> Operational Status of school. Not used in all states.
<b>accreditation</b>	<i>System Administration &gt; Resources &gt; School</i> Accreditation Status of school. Not used in all states.
<b>gradeType</b>	<i>System Administration &gt; Resources &gt; School</i> Grade Type associated with school. Not used in all states.
<b>sector</b>	<i>System Administration &gt; Resources &gt; School</i> Sector of education school is related to (e.g. public, non-public). Not used in all states.
<b>locale</b>	<i>System Administration &gt; Resources &gt; School</i> Locale Code indicating school size and location. Not used in all states.
<b>locale2</b>	<i>System Administration &gt; Resources &gt; School</i> Locale Old Code indicating school size and location. Not used in all states.
<b>blueRibbon</b>	<i>System Administration &gt; Resources &gt; School</i> If flagged, checkbox indicates school is considered a Blue Ribbon School. Not used in all states.
<b>title1Distinguished</b>	<i>System Administration &gt; Resources &gt; School</i> If flagged, checkbox indicates school is considered a Title 1 Distinguished School. Not used in all states.
<b>entityID</b>	<i>System Administration &gt; Resources &gt; School</i> Reporting entity for the school. Not used in all states.
<b>aypStatus</b>	<i>System Administration &gt; Resources &gt; School</i> Indicator of school's AYP School Status. Not used in all states.
<b>size</b>	<i>System Administration &gt; Resources &gt; School</i> The school's MHSA Designation. Not used in all states.

## KNOWLEDGE BASE - CENSUS-STAFF FILTER FIELDS FOR AD HOC REPORTING

<b>sessionType</b>	<i>Not applicable to interface SIF element.</i>
<b>fRYSCServiceCenterCode</b>	<i>System Administration &gt; Resources &gt; School FRYSC Service Center serving this school.</i>
<b>modifiedByID</b>	<i>Does not appear.</i> Lists the person who modified the information.
<b>modifiedDate</b>	<i>Does not appear.</i> Date of last change.
<b>Credential</b>	<b>Person &gt; Staff &gt; Credential</b>
<b>credentialID</b>	Internal database identifier.
<b>personID</b>	Internal database identifier.
<b>area</b>	<i>Census &gt; People &gt; Credential</i> Indicates the area of study in which the teacher is experienced.
<b>credentialType</b>	<i>Census &gt; People &gt; Credential</i> Indicates the type of credential.
<b>creditHours</b>	<i>Census &gt; People &gt; Credential</i> Indicates the number of credit hours earned.
<b>number</b>	<i>Census &gt; People &gt; Credential</i> Indicates the credential number.
<b>date</b>	<i>Census &gt; People &gt; Credential</i> Indicates the date the credential was earned.
<b>employmentCredentialType</b>	<i>Census &gt; People &gt; Credential</i> Type of credential staff person has.
<b>subjectType</b>	<i>Census &gt; People &gt; Credential</i> Indicates the type of competency staff person has.
<b>coreSubject</b>	<i>Census &gt; People &gt; Credential</i> Subject area staff person is designated to teach.
<b>metHousse</b>	<i>Census &gt; People &gt; Credential</i> Indicates staff person has met the requirements of HOUSSE.
<b>housseDate</b>	<i>Census &gt; People &gt; Credential</i> Date staff person completed the HOUSSE.
<b>subjectCompetency</b>	<i>Census &gt; People &gt; Credential</i> Indicates the staff person has subject competency.
<b>degreeType</b>	<i>Census &gt; People &gt; Credential</i> Indicates the staff person has full certification.
<b>fullCertification</b>	<i>Census &gt; People &gt; Credential</i> Indicates the staff person has full certification.
<b>lepCredential</b>	<i>Census &gt; People &gt; Credential</i> Indicates staff person has an LEP Credential

## KNOWLEDGE BASE - CENSUS-STAFF FILTER FIELDS FOR AD HOC REPORTING

<b>licenseNumber</b>	<i>Census &gt; People &gt; Credential</i> License Number of staff person.
<b>licenseType</b>	<i>Census &gt; People &gt; Credential</i> Type of License staff person has.
<b>endDate</b>	<i>Census &gt; People &gt; Credential</i> Date the credential will end or has ended.
<b>campusCode</b>	<i>Census &gt; People &gt; Credential</i> Code indicating the institution where the staff member received education credentials.
<b>institutionType</b>	<i>Census &gt; People &gt; Credential</i> Type of education institution.
<b>districtID</b>	Internal database identifier.
<b>credentialGUID</b>	Internal database identifier.
<b>spedRelatedService</b>	<i>Census &gt; People &gt; Credential</i> Indicates the staff person serves in a special education related service.
<b>eduState</b>	<i>Census &gt; People &gt; Credential</i> Indicates in what state the staff member received education credentials.
<b>subjectArea</b>	<i>Census &gt; People &gt; Credentials</i> Subject area of the credential, based on core academic classes. Not used in all states.
<b>paraprofessionalQualification</b>	<i>Census &gt; People &gt; Credentials</i> Qualifications specific to a paraprofessional. Not used in all states.
<b>stateReported</b>	<i>Census &gt; People &gt; Credentials &gt; Education</i> Indicates that the data in this record is reported as the primary education information in the Staff demographics and employment records. Not used in all states.
<b>majorCipCode</b>	<i>Census &gt; People &gt; Credentials &gt; Education</i> The major subject code for the degree reported in District Employment.
<b>minorCipCode</b>	<i>Census &gt; People &gt; Credentials &gt; Education</i> The minor subject of the degree reported in District Employment
<b>stateCompetency</b>	<i>Census &gt; People &gt; Credentials &gt; Education</i> The state-defined competency determination of the individual.
<b>Teaching Assignment</b>	<b><i>Person &gt; Staff &gt; Teaching Assignment</i></b>
<b>personID</b>	Internal database identifier.
<b>trialID</b>	Internal database identifier.
<b>calendarID</b>	Internal database identifier.
<b>courseID</b>	Internal database identifier.

# KNOWLEDGE BASE - CENSUS-STAFF FILTER FIELDS FOR AD HOC REPORTING

<b>sectionID</b>	Internal database identifier.
<b>assignmentID</b>	Internal database identifier
<b>title</b>	<i>Census &gt; People &gt; District Assignment</i> The person's title associated with their district assignments.
<b>stateTitle</b>	<i>Census &gt; People &gt; District Assignment &gt; State Title</i> The state-defined title associated with the person's district assignments.
<b>School Calendar</b>	<b>Person &gt; Staff &gt; Teaching Assignment &gt; School Calendar</b>
<b>calendarID</b>	Internal database identifier.
<b>districtID</b>	Internal database identifier.
<b>schoolID</b>	Internal database identifier.
<b>endYear</b>	<i>System Administration &gt; Calendar &gt; Calendar</i> The 4-digit year marking the end of the school year (i.e. 2006 would be the end of the 05-06 school year).
<b>name</b>	<i>System Administration &gt; Calendar &gt; Calendar</i> Name of calendar.
<b>number</b>	<i>System Administration &gt; Calendar &gt; Calendar</i> Number associated with calendar.
<b>startDate</b>	<i>System Administration &gt; Calendar &gt; Calendar</i> Lists the date when the calendar is first used. This is NOT the first day of instruction, but could be the first day staff is available.
<b>endDate</b>	<i>System Administration &gt; Calendar &gt; Calendar</i> Lists the date when the calendar is last used. This is NOT the last day of instruction, but could be the last day staff are available.
<b>comments</b>	<i>System Administration &gt; Calendar &gt; Calendar</i> Notes any comments associated with the calendar.
<b>exclude</b>	<i>System Administration &gt; Calendar &gt; Calendar</i> When this checkbox is marked, the calendar is not used in state reporting extracts.
<b>summerSchool</b>	<i>System Administration &gt; Calendar &gt; Calendar</i> When this checkbox is marked, the calendar is labeled as a summer school calendar.
<b>studentDay</b>	<i>System Administration &gt; Calendar &gt; Calendar</i> Lists the total number of minutes students are scheduled into courses.
<b>teacherDay</b>	<i>System Administration &gt; Calendar &gt; Calendar</i> Lists the total number of minutes teachers are available for instruction and prep time.
<b>wholeDayAbsence</b>	<i>System Administration &gt; Calendar &gt; Calendar</i> Lists the total number of minutes that constitutes a full day of absence per a district or state decision. Used in calculating ADM and ADA.

## KNOWLEDGE BASE - CENSUS-STAFF FILTER FIELDS FOR AD HOC REPORTING

<b>halfDayAbsence</b>	<i>System Administration &gt; Calendar &gt; Calendar</i> Lists the total number of minutes that constitutes a half day of absence per a district or state decision. Used in calculating ADM and ADA.
<b>calendarGUID</b>	Internal database identifier.
<b>alternativeCode</b>	<i>System Administration &gt; Calendar &gt; Calendar</i> If flagged, checkbox indicates a 4 Day School Week. Not used in all states.
<b>title3</b>	<i>System Administration &gt; Calendar &gt; Calendar</i> Indicates district participates in the Title 3 program. Not used in all states.
<b>title3consortium</b>	<i>System Administration &gt; Calendar &gt; Calendar</i> Indicates the school is part of a team of districts operating together to improve student learning using Title 3 funds. Not used in all states.
<b>title1</b>	<i>System Administration &gt; Resources &gt; School</i> Displays the selection of the Title 1 funding options.
<b>legacyKey</b>	Used during data conversion.
<b>schoolChoice</b>	<i>System Administration &gt; Calendar &gt; Calendar</i> If flagged, checkbox indicates calendar is labeled as using school choice functionality.
<b>type</b>	<i>System Administration &gt; Calendar &gt; Calendar</i> Calendar type is usually (I)nstructional, but can also be (S)ummer School, (R)esidential, etc.
<b>countDate</b>	<i>System Administration &gt; Calendar &gt; Calendar</i> Testing Count Date. Not used in all states.
<b>assignmentRequired</b>	<i>System Administration &gt; Calendar &gt; Calendar</i> Defines if students enrolling in this calendar are required to follow school boundary assignment logic.
<b>Calendar Assignment Override</b>	<b><i>Person &gt; Staff &gt; Teaching Assignment &gt; School Calendar &gt; Calendar Assignment Override</i></b>
<b>calendarOverrideID</b>	Internal database identifier.
<b>calendarID</b>	Internal database identifier.
<b>overrideType</b>	<i>System Administration &gt; Calendar &gt; Calendar &gt; Overrides</i> Displays selection of type of override used in school placement.
<b>Course Information</b>	<b><i>Person &gt; Staff &gt; Teaching Assignment &gt; Course Information</i></b>
<b>courseID</b>	Internal database identifier.
<b>courseMasterID</b>	Internal database identifier.
<b>calendarID</b>	Internal database identifier.
<b>schoolID</b>	Internal database identifier.

## KNOWLEDGE BASE - CENSUS-STAFF FILTER FIELDS FOR AD HOC REPORTING

<b>districtID</b>	Internal database identifier.
<b>endYear</b>	<i>System Administration &gt; Calendar &gt; Calendar</i> The 4-digit year marking the end of the school year (i.e. 2006 would be the end of the 05-06 school year).
<b>courseNumber</b>	<i>Scheduling &gt; Courses</i> Course number.
<b>courseName</b>	<i>Scheduling &gt; Courses</i> Course name.
<b>stateCode</b>	<i>Scheduling &gt; Courses</i> State code associated with this course.
<b>description</b>	<i>Scheduling &gt; Courses</i> User-entered course description.
<b>descriptionNoHTML</b>	<i>Scheduling &gt; Courses</i> User-entered course description devoid of HTML tags.
<b>departmentID</b>	Internal database identifier.
<b>departmentName</b>	<i>Scheduling &gt; Courses</i> District or school-defined department name for use in organizing curriculum.
<b>type</b>	<i>Scheduling &gt; Courses</i> Course type indicating that course is R: Required, E: Elective, or other.
<b>programType</b>	<i>Scheduling &gt; Courses</i> Stores the type of program the course is related to.
<b>teachingMethod</b>	<i>Scheduling &gt; Courses</i> Stores the teaching method of the course.
<b>vocationsCode</b>	<i>Scheduling &gt; Courses</i> Stores the vocational code of the course. Not used in all states.
<b>distanceCode</b>	<i>Scheduling &gt; Courses</i> Instructional setting of course.
<b>specialEdCode</b>	<i>Scheduling &gt; Courses</i> Stores the special education code for the course.
<b>coursePart</b>	<i>Scheduling &gt; Courses</i> Stores the course part for the course.
<b>honorsCode</b>	<i>Scheduling &gt; Courses</i> Difficulty level of course.
<b>activityCode</b>	<i>Scheduling &gt; Courses</i> The district-defined activity code of the course for tracking activity rosters and groups.
<b>homeroom</b>	<i>Scheduling &gt; Courses &gt; Section</i> Indicates whether or not the course is designated as a homeroom for state reporting purposes.



## KNOWLEDGE BASE - CENSUS-STAFF FILTER FIELDS FOR AD HOC REPORTING

<b>transcript</b>	<i>Scheduling &gt; Courses</i> Indicates whether or not the course should be posted to transcript.
<b>requestable</b>	<i>Scheduling &gt; Courses</i> Indicates whether or not the course is available for request via the portal.
<b>required</b>	<i>Scheduling &gt; Courses</i> Indicates whether or not the course is a required course.
<b>attendance</b>	<i>Scheduling &gt; Courses</i> Indicates attendance should be taken in the course.
<b>unitAttendance</b>	<i>Scheduling &gt; Courses</i> Indicates whether or not the course has unit attendance.
<b>terms</b>	<i>Scheduling &gt; Courses</i> Stores the number of terms the course meets.
<b>schedules</b>	<i>Scheduling &gt; Courses</i> Determines how many period schedules a section will take up in schools with multiple period schedules.
<b>periods</b>	<i>Scheduling &gt; Courses</i> The number of periods a section of the course lasts.
<b>gpaWeight</b>	<i>Scheduling &gt; Courses</i> The weight the course should contribute to a student's cumulative GPA.
<b>bonusPointsAvail</b>	<i>Scheduling &gt; Courses</i> Indicates whether or not bonus points are available.
<b>maxStudents</b>	<i>Scheduling &gt; Courses</i> The maximum number of students who can be enrolled in the course.
<b>priority</b>	<i>Scheduling &gt; Courses</i> The priority of the course as related to others courses in the scheduling process.
<b>sectionsToBuild</b>	<i>Scheduling &gt; Courses</i> The number of sections that need to be built for the course in the schedule.
<b>sections</b>	<i>Scheduling &gt; Courses</i> Count of all sections existing for all active courses in selected calendar.
<b>pseoType</b>	<i>Scheduling &gt; Courses</i> Stores the PSEO number in the Community College CTDS field. Not used in all states.
<b>pseoCredit</b>	<i>Scheduling &gt; Courses</i> Stores the number of PSEO credits the course is worth. Not used in all states.
<b>specialCode</b>	<i>Scheduling &gt; Courses &gt; Course</i> Stores the special education code for the course.



## KNOWLEDGE BASE - CENSUS-STAFF FILTER FIELDS FOR AD HOC REPORTING

<b>highSchoolCredit</b>	<i>Scheduling &gt; Courses &gt; Course</i> Checkbox indicating that course is grants high school credit. Not used in all states.
<b>catalogID</b>	Internal database identifier.
<b>catalogName</b>	<i>Grading and Standards &gt; Course Catalog</i> Course catalog name.
<b>courseMasterNumber</b>	<i>Grading and Standards &gt; Course Master</i> Course number for this course master entry.
<b>courseMasterName</b>	<i>Scheduling &gt; Course Catalog</i> Course name for this course master entry.
<b>courseMasterStateCode</b>	<i>Scheduling &gt; Course Catalog</i> Course state code for this course master entry.
<b>altStateCode</b>	<i>Scheduling &gt; Courses &gt; Courses</i> Alternative state code associated with this course. Not available in all states.
<b>abbreviation</b>	Abbreviation of the course name. Appears when searching.
<b>grade</b>	<i>Scheduling &gt; Courses &gt; Course</i> The grade related to the course.
<b>Section Information</b>	<b><i>Person &gt; Staff &gt; Teaching Assignment &gt; Section Information</i></b>
<b>sectionID</b>	Internal database identifier.
<b>trialID</b>	Internal database identifier.
<b>calendarID</b>	Internal database identifier.
<b>courseID</b>	Internal database identifier.
<b>sectionNumber</b>	<i>Scheduling &gt; Courses &gt; Section</i> Section number for instance of course.
<b>teacherDisplay</b> <b>teacher2Display</b> <b>teacher3Display</b> <b>teacher4Display</b>	<i>Scheduling &gt; Courses &gt; Section</i> Stores the teacher name displayed on student schedules, default to fullname, may be changed in section editor.
<b>sectionStaff1Display</b> <b>sectionStaff2Display</b> <b>sectionStaff3Display</b>	<i>Scheduling &gt; Courses &gt; Section</i> Displays additional staff members who can view roster information for the course section (special education teachers, etc.).
<b>maxStudents</b>	<i>Scheduling &gt; Courses &gt; Section</i> The maximum number of students who can be enrolled in the course.
<b>classType</b>	<i>Scheduling &gt; Courses &gt; Section</i> Stores the type of class for the section. Not used in all states.
<b>schedGroupID</b>	Internal database identifier.

## KNOWLEDGE BASE - CENSUS-STAFF FILTER FIELDS FOR AD HOC REPORTING

<b>groupName</b>	<i>Scheduling &gt; Course &gt; Section</i> Name of the scheduling group or team assigned to the section, if applicable.
<b>roomID</b>	Internal database identifier.
<b>roomName</b>	<i>Scheduling &gt; Course &gt; Section</i> Name associated with room.
<b>roomPhone</b>	<i>Scheduling &gt; Course &gt; Section</i> Phone number to room.
<b>roomCapacity</b>	<i>Scheduling &gt; Course &gt; Section</i> Number of people room can hold.
<b>lunchID</b>	Internal database identifier.
<b>lunchName</b>	<i>Scheduling &gt; Course &gt; Section</i> The name of the lunch scheduled within the section, if lunches are set up in Scheduling > Lunches.
<b>lunchCount</b>	<i>Scheduling &gt; Courses &gt; Section</i> If flagged, checkbox indicates the lunch count field should be added to the attendance tool for this course section.
<b>milkCount</b>	<i>Scheduling &gt; Courses &gt; Section</i> If flagged, checkbox indicates the milk count field should be added to the attendance tool for this course section.
<b>homeroomSection</b>	<i>Scheduling &gt; Courses &gt; Section</i> Indicates the section is the Homeroom for the student.
<b>serviceDistrict</b>	<i>Scheduling &gt; Courses &gt; Section</i> Notes the name of the district where students receive special services.
<b>serviceSchool</b>	<i>Scheduling &gt; Courses &gt; Section</i> Notes the name of the school building where students receive special services.
<b>multipleTeacherCode</b>	<i>Scheduling &gt; Courses &gt; Section</i> Code indicating reason Multiple Teacher(s) are assigned to section. Not used in all states.
<b>lockBuild</b>	Indicates that the scheduling build may not be changed.
<b>lockRoster</b>	Indicates that the roster may not be changed. Rosters are locked within the Schedule Wizard.
<b>giftedDelivery</b>	<i>Scheduling &gt; Courses &gt; Section</i> If flagged, checkbox indicates course is targeted at students receiving gifted services. Not used in all states.
<b>giftedContentArea</b>	<i>Scheduling &gt; Courses &gt; Section</i> Identifies the state-defined gifted delivery area for this course. Not used in all states.

## KNOWLEDGE BASE - CENSUS-STAFF FILTER FIELDS FOR AD HOC REPORTING

<b>parapros</b>	<i>Scheduling &gt; Courses &gt; Section</i> Number of paraprofessionals attached to this section. Not used in all states.
<b>skinnySeq</b>	<i>Scheduling &gt; Courses &gt; Section</i> Determines which course prints first on a student schedule when two or more occur courses are taken within the same period. The course with the lowest number will print first on student's schedule.
<b>teacherPersonID</b> <b>teacher2PersonID</b> <b>teacher3PersonID</b> <b>teacher4PersonID</b>	Internal database identifier.
<b>teacherLastName</b> <b>teacher2LastName</b> <b>teacher3LastName</b> <b>teacher4LastName</b>	<i>Scheduling &gt; Courses &gt; Section</i> Last name of the primary teacher assigned to section.
<b>teacherFirstName</b> <b>teacher2FirstName</b> <b>teacher3FirstName</b> <b>teacher4FirstName</b>	<i>Scheduling &gt; Courses &gt; Section</i> First name of the primary teacher assigned to section.
<b>teacher2StaffStateID</b> <b>teacher3StaffStateID</b> <b>teacher4StaffStateID</b>	<i>Scheduling &gt; Courses &gt; Section</i> The Staff State ID number of the primary teacher assigned to section.
<b>teacher2StaffNumber</b> <b>teacher3StaffNumber</b> <b>teacher4StaffNumber</b>	<i>Scheduling &gt; Courses &gt; Section</i> The staff number of the primary teacher assigned to section.
<b>sectionStaff1StateID</b> <b>sectionStaff2StateID</b> <b>sectionStaff3StateID</b>	<i>Scheduling &gt; Courses &gt; Section</i> The Staff State ID number of the section staff assigned to section.
<b>sectionStaff1Number</b> <b>sectionStaff2Number</b> <b>sectionStaff3Number</b>	<i>Scheduling &gt; Courses &gt; Section</i> The staff number of the section staff assigned to section.
<b>sectionStaff1PersonID</b> <b>sectionStaff2PersonID</b> <b>sectionStaff3PersonID</b>	Internal database identifier.
<b>sectionStaff1LastName</b> <b>sectionStaff2LastName</b> <b>sectionStaff3LastName</b>	<i>Scheduling &gt; Courses &gt; Section</i> Last name of the section staff assigned to section.
<b>sectionStaff1FirstName</b> <b>sectionStaff2FirstName</b> <b>sectionStaff3FirstName</b>	<i>Scheduling &gt; Courses &gt; Section</i> First name of the section staff assigned to section.
<b>nonHqtReason</b>	<i>Scheduling &gt; Courses &gt; Section</i> Reason that the section is not taught by a Highly Qualified Teacher. Not available in all states.

## KNOWLEDGE BASE - CENSUS-STAFF FILTER FIELDS FOR AD HOC REPORTING

<b>nonHqtExplanation</b>	<i>Scheduling &gt; Courses &gt; Section</i> Explanation of why the section is not taught by a Highly Qualified Teacher. Not available in all states.
<b>highlyQualified</b>	<i>Scheduling &gt; Courses &gt; Sections</i> Indicates if teacher of section is considered highly qualified.
<b>Roster Summary</b>	<b><i>Person &gt; Staff &gt; Teaching Assignment &gt; Section Information &gt; Roster Summary</i></b>
<b>sectionID</b>	Internal database identifier.
<b>trialID</b>	Internal database identifier.
<b>calendarID</b>	Internal database identifier.
<b>studentCount</b>	<i>Scheduling &gt; Courses &gt; Section &gt; Roster</i> Count of requests for this course flagged as Required or Elective.
<b>maleStudentCount</b>	<i>Scheduling &gt; Courses &gt; Section &gt; Roster</i> Count of non-alternate requests for this course made by male students.
<b>femaleStudentCount</b>	<i>Scheduling &gt; Courses &gt; Section &gt; Roster</i> Count of non-alternate requests for this course made by female students.
<b>specialEdStudents</b>	<i>Scheduling &gt; Courses &gt; Section &gt; Roster</i> Count of non-alternate requests for this course made by special education students with a current IEP.
<b>gradeKGstudents</b>	<i>Scheduling &gt; Courses &gt; Section &gt; Roster</i> Count of non-alternate requests for this course made by kindergarten students.
<b>grade01students</b>	<i>Scheduling &gt; Courses &gt; Section &gt; Roster</i> Count of non-alternate requests for this course made by first-grade students.
<b>grade02students</b>	<i>Scheduling &gt; Courses &gt; Section &gt; Roster</i> Count of non-alternate requests for this course made by second-grade students.
<b>grade03students</b>	<i>Scheduling &gt; Courses &gt; Section &gt; Roster</i> Count of non-alternate requests for this course made by third-grade students.
<b>grade04students</b>	<i>Scheduling &gt; Courses &gt; Section &gt; Roster</i> Count of non-alternate requests for this course made by fourth-grade students.
<b>grade05students</b>	<i>Scheduling &gt; Courses &gt; Section &gt; Roster</i> Count of non-alternate requests for this course made by fifth-grade students.
<b>grade06students</b>	<i>Scheduling &gt; Courses &gt; Section &gt; Roster</i> Count of non-alternate requests for this course made by sixth-grade students.

# KNOWLEDGE BASE - CENSUS-STAFF FILTER FIELDS FOR AD HOC REPORTING

<b>grade07Students</b>	<i>Scheduling &gt; Courses &gt; Section &gt; Roster</i> Count of non-alternate requests for this course made by seventh-grade students.
<b>grade08Students</b>	<i>Scheduling &gt; Courses &gt; Section &gt; Roster</i> Count of non-alternate requests for this course made by eighth-grade students.
<b>grade09Students</b>	<i>Scheduling &gt; Courses &gt; Section &gt; Roster</i> Count of non-alternate requests for this course made by ninth-grade students.
<b>grade10Students</b>	<i>Scheduling &gt; Courses &gt; Section &gt; Roster</i> Count of non-alternate requests for this course made by tenth-grade students.
<b>grade11Students</b>	<i>Scheduling &gt; Courses &gt; Section &gt; Roster</i> Count of non-alternate requests for this course made by eleventh-grade students.
<b>grade12Students</b>	<i>Scheduling &gt; Courses &gt; Section &gt; Roster</i> Count of non-alternate requests for this course made by twelfth-grade students.
<b>drops</b>	<i>Scheduling &gt; Courses &gt; Section &gt; Roster</i> Count of students who have dropped the section.
<b>Section Schedule</b>	<b><i>Person &gt; Staff &gt; Section Information &gt; Section Schedule</i></b>
<b>calendarID</b>	Internal database identifier.
<b>structureID</b>	Internal database identifier.
<b>trialID</b>	Internal database identifier.
<b>termStart</b>	<i>System Administration &gt; Calendar &gt; Terms</i> Very first day students begin taking classes in term.
<b>termEnd</b>	<i>System Administration &gt; Calendar &gt; Terms</i> Very last day students take classes in term.
<b>terms</b>	<i>System Administration &gt; Calendar &gt; Calendar &gt; Terms</i> Number of terms the course section takes place.
<b>scheduleStart</b>	<i>System Administration &gt; Calendar &gt; Calendar &gt; Terms</i> Start date of term schedule.
<b>scheduleEnd</b>	<i>System Administration &gt; Calendar &gt; Calendar &gt; Terms</i> End date of term schedule.
<b>schedules</b>	<i>System Administration &gt; Calendar &gt; Calendar &gt; Terms</i> Number of period schedules a section will take up in schools with multiple period schedules.
<b>periodStart</b>	<i>System Administration &gt; Calendar &gt; Period</i> The time of the first minute in military time the period meets.
<b>periodEnd</b>	<i>System Administration &gt; Calendar &gt; Period</i> The time of the last minute in military time (24 hour clock) which this period meets.

## KNOWLEDGE BASE - CENSUS-STAFF FILTER FIELDS FOR AD HOC REPORTING

<b>periods</b>	<i>System Administration &gt; Calendar &gt; Period</i> Number of periods the course section runs.
----------------	--

**Census/Staff > Food Service**

<b>Filter Fields</b>	<b>Mapping and Definition</b>
<b><i>Eligibility</i></b>	<b><i>Person &gt; Food Service &gt; Eligibility</i></b>
<b>eligibilityID</b>	Internal database identifier
<b>eligibility</b>	<i>FRAM &gt; Eligibility</i> Student's meal status eligibility.
<b>personID</b>	Internal database identifier
<b>endYear</b>	<i>FRAM &gt; Eligibility</i> Last school year to which eligibility applies.
<b>type</b>	<i>FRAM &gt; Eligibility</i> Certified type of eligibility
<b>startDate</b>	<i>FRAM &gt; Eligibility</i> Start date of the food service eligibility.
<b>endDate</b>	<i>FRAM &gt; Eligibility</i> End date of the food service eligibility.
<b>applicationID</b>	Internal database identifier
<b>optOutMedicaid</b>	<i>FRAM &gt; Eligibility</i> Indicates that parent does not want to be contacted by that specific agency.
<b>optOutSCHIP</b>	<i>FRAM &gt; Eligibility</i> Indicates that parent does not want to be contacted by that specific agency.
<b>districtID</b>	Internal database identifier
<b>eligibilityGUID</b>	Internal database identifier
<b>freeMilk</b>	<i>FRAM &gt; Eligibility</i> Student receives free milk assistance.
<b>notParticipate</b>	<i>FRAM &gt; Eligibility</i> Indicates that student does not participate in meal assistance.
<b>StateCode</b>	<i>FRAM &gt; Eligibility</i> State eligibility code attached to the eligibility.

## KNOWLEDGE BASE - CENSUS-STAFF FILTER FIELDS FOR AD HOC REPORTING

**(Census/Staff) Person > Campus Usage**

Filter Field	Mapping and Definition
<b>User Account/Summary</b>	<b>Person &gt; Campus Usage &gt; User Account/Summary</b>
<b>userID</b>	Internal database identifier.
<b>personID</b>	Internal database identifier.
<b>districtID</b>	Internal database identifier.
<b>username</b>	<i>System Administration &gt; User Security &gt; User &gt; User Account</i> Login name assigned to a user.
<b>allModules</b>	<i>System Administration &gt; User Security &gt; User &gt; User Account</i> If flagged, the All Tools checkbox indicates a user has rights to all tools/modules in Campus.
<b>allCalendars</b>	<i>System Administration &gt; User Security &gt; User &gt; User Account</i> If flagged, indicates whether or not user has rights to all historical calendars.
<b>failCount</b>	<i>System Administration &gt; User Security &gt; User &gt; User Account</i> Stores the number of failed login attempts the user has had since the last successful login.
<b>forceChangePassword</b>	<i>System Administration &gt; User Security &gt; User &gt; User Account</i> If flagged, indicates whether or not user must change his/her password at next login attempt.
<b>disable</b>	<i>System Administration &gt; User Security &gt; User &gt; User Account</i> If flagged, indicates whether or not the User's account has been disabled, a result of either administrator action or excessive failed login attempts.
<b>expiresDate</b>	<i>System Administration &gt; User Security &gt; User &gt; User Account</i> Date the user's account will become inactive.
<b>homepage</b>	<i>System Administration &gt; User Security &gt; User &gt; User Account</i> Lists the Portal URL for Portal users.
<b>name</b>	<i>System Administration &gt; User Security &gt; User</i> Name of the user who last logged in (from SecurityAccess table).
<b>serverName</b>	<i>System Administration &gt; User Security &gt; User</i> Network name of server user logged into.
<b>remoteIP</b>	<i>Access Log</i> <i>System Administration &gt; User Security &gt; User &gt; Access Log</i> Stores the IP address from which login was attempted.
<b>remoteName</b>	<i>Access Log</i> <i>System Administration &gt; User Security &gt; User &gt; Access Log</i> Stores the remote browser name from which login was attempted.



## KNOWLEDGE BASE - CENSUS-STAFF FILTER FIELDS FOR AD HOC REPORTING

<b>remoteBrowser</b>	<i>Access Log</i> Stores the info about the browser from which login was attempted.
<b>timestamp</b>	<i>Access Log</i> <i>System Administration &gt; User Security &gt; User &gt; Access Log</i> Records the date and time of login attempts for user.
<b>appServer</b>	<i>Access Log</i> <i>System Administration &gt; User Security &gt; User &gt; Access Log</i> Stores the appserver instance that processed the login attempt.
<b>accountType</b>	<i>System Administration &gt; User Security &gt; User Account</i> Homepage interface assigned to the account (e.g. Campus application, Portal, other).
<b>lastAccessedTimestamp</b>	<i>Access Log</i> <i>System Administration &gt; User Security &gt; User &gt; Access Log</i> Timestamp of the most recent login attempt.
<b>loginsThisWeek</b>	<i>Access Log</i> <i>System Administration &gt; User Security &gt; User &gt; Access Log</i> Count of logins occurring within the last seven days.
<b>loginsThisMonth</b>	<i>Access Log</i> <i>System Administration &gt; User Security &gt; User &gt; Access Log</i> Count of logins occurring within the last thirty days.
<b>totalLoginCount</b>	<i>Access Log</i> <i>System Administration &gt; User Security &gt; User &gt; Access Log</i> Total logins stored in the SecurityAccess table.
<b>LDAPDN</b>	<i>Does Not Appear</i> The Distinguished Name from the Active Directory. Results indicate the user's location in the Active Directory organizational structures and the common name.
<b>LDAPGUID</b>	<i>Does Not Appear</i> Populates when users have been updated to the LDAP account and linked to the Active Directory.

**(Census/Staff) Person > Custom Tab**

<b>Filter Field</b>	<b>Mapping and Definition</b>
<b>Custom Filter</b>	<i>System Administration &gt; Custom &gt; Custom Tab &gt; Person Tabset &gt; People</i> Custom Tab fields are locally customized fields created and used by a district for internal purposes. Custom Tabs aligned with the People Person Tabset populate in this area.